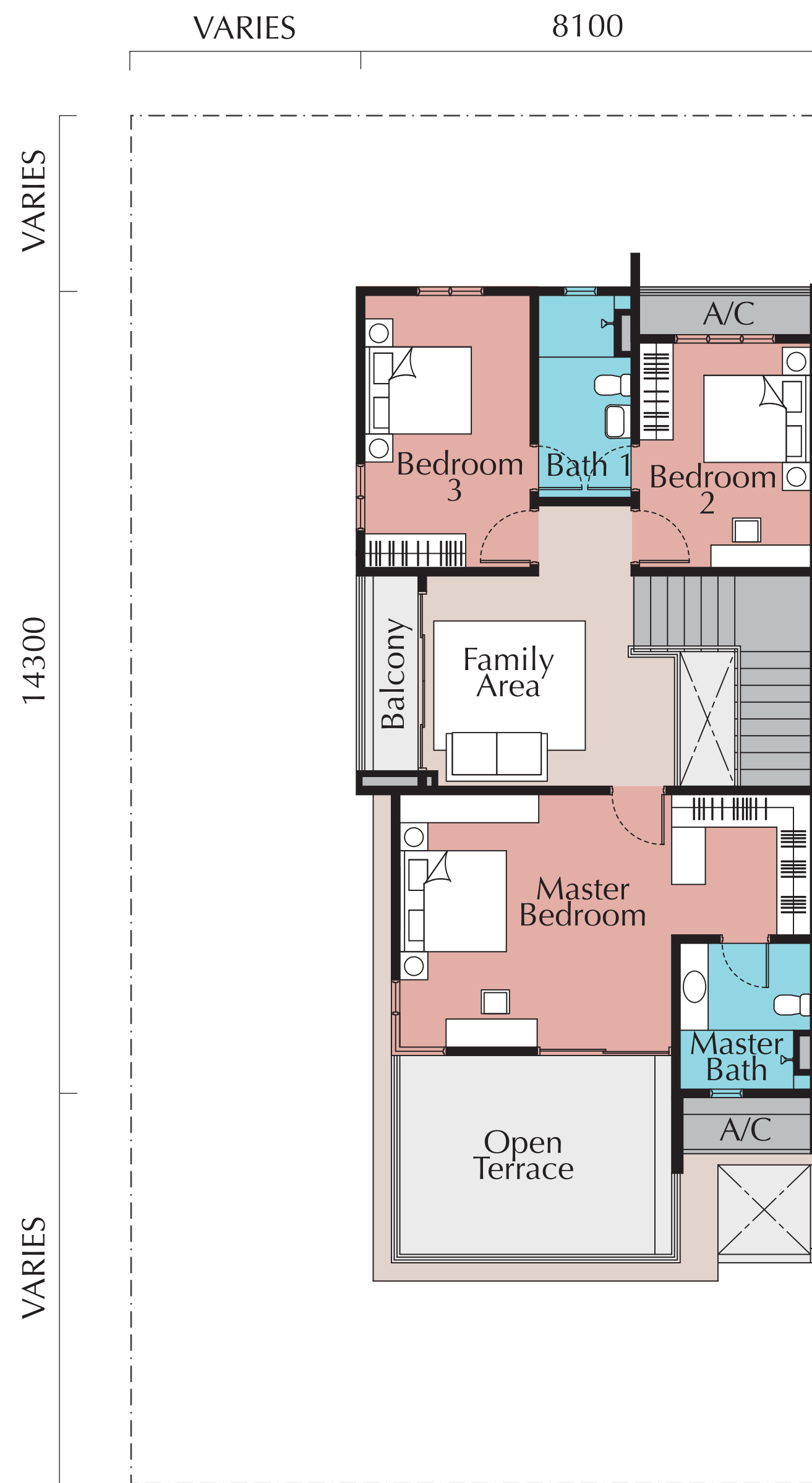


GROUND FLOOR



FIRST FLOOR



Typical Floor Plan

TYPE A

2-STOREY SEMI-D HOME

40' x 80'

Gross Built Up Area : 2,850 sq.ft.



GROUND FLOOR



FIRST FLOOR



Typical Floor Plan

TYPE B

2-STOREY SEMI-D HOME

40' x 80'

Gross Built Up Area : 3,166 sq.ft.